

All assets on one platform

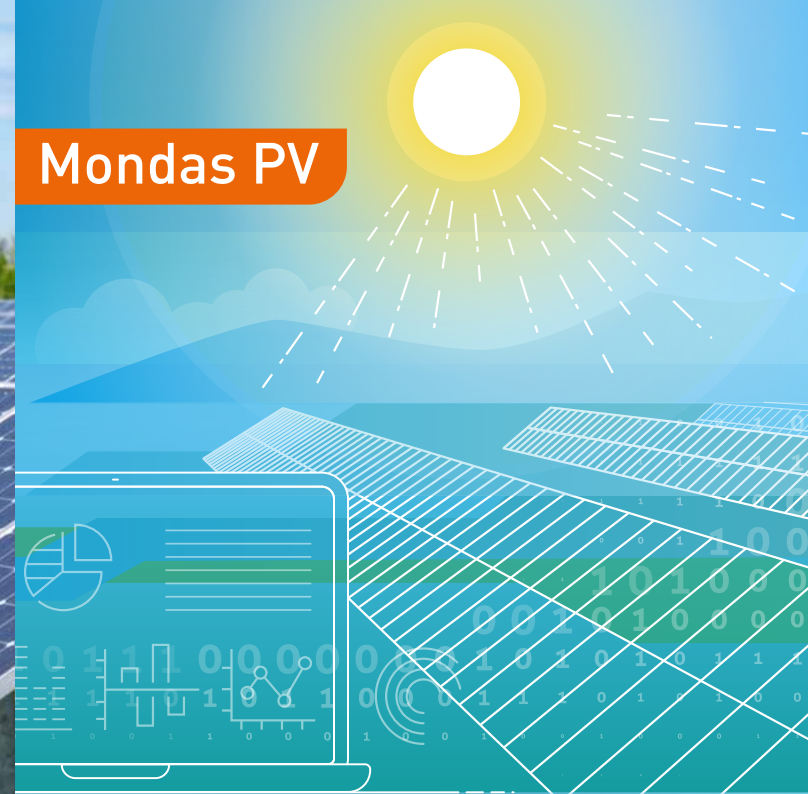
Mondas PV allows you to seamlessly integrate battery storage, e-charging stations and heat pumps with monitoring and data analysis.

It combines dynamic feed-in tariffs, weather forecasts, load management strategies and system-serving conditions to enable data-driven and cost-efficient operation of the overall system.

Mondas PV – your monitoring software for the new energy era



Mondas PV



Testimonials



“**Mondas PV**, gives us a much clearer view of all monitored solar systems and battery storage units.”

Dr. Tadej Smogavec
COO & Business Development
Enertec d.o.o. Slovenia

“**Mondas PV** has dramatically simplified our monitoring processes, reducing the time by more than half and even earning praise from customers for the solution. They now have much better visibility of their data.”

Dr. José Miguel Carmona Ampuero
Ylio – Sustainable Engineering, Spain

Book a demonstration now!

- Mondas PV in action
- Savings potential
- Successful reference projects



mondas[®]

Mondas GmbH
Emmy-Noether-Str. 2
79110 Freiburg / Germany
Tel.: +49 761 2160890
vertrieb@mondas-iot.de
www.mondas-iot.de

June 2026

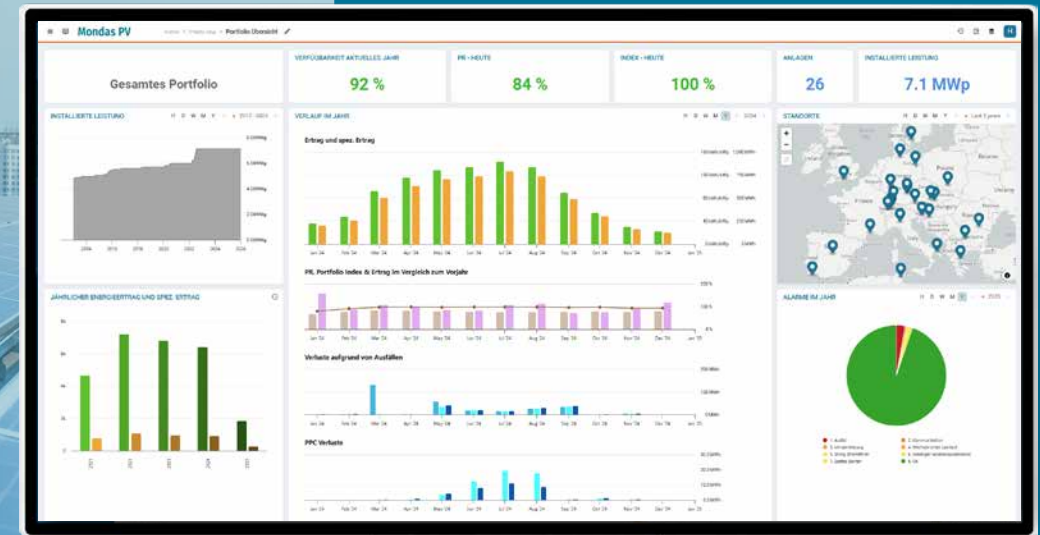
Monitor and optimize
PV portfolios

mondas[®]

Mondas PV



With **Mondas PV**, you stay in full control of your solar power plant's energy output and operating status – securely and at a glance.



Next-generation PV monitoring

Mondas PV is a powerful and proven software platform for monitoring and analyzing large photovoltaic portfolios.

Whether it's ground-mounted PV, an industrial-scale system or a commercial tenant power project: With Mondas PV it's easy to keep track of all plants, yields and deviations, for any manufacturer and in real time.

Mondas PV sets itself apart through in-depth analysis combined with an intuitive user experience – for the safe and efficient management even of dynamically growing PV portfolios.

Key features

- Automated monitoring and analysis
- User-friendly and flexible dashboard configuration
- Prioritises relevant alarms
- Possibility to integrate client-specific KPIs
- Integrated algorithm library
- Customisable yield, plant performance and error reporting
- Weather data and, upon request, forecasts integrated by default
- Easy connection of inventory data and new plants
- Data management on certified servers located at data centers in Germany



Key benefits

- All analyses on one platform
- Manufacturer-independent operation management
- Minimal time required for error recognition
- Yield optimization
- Maintenance and operating cost savings
- Cross-manufacturer and cross-sector data integration
- Can be combined with battery storage, e-charging stations etc.
- Tried-and-tested, scalable and secure